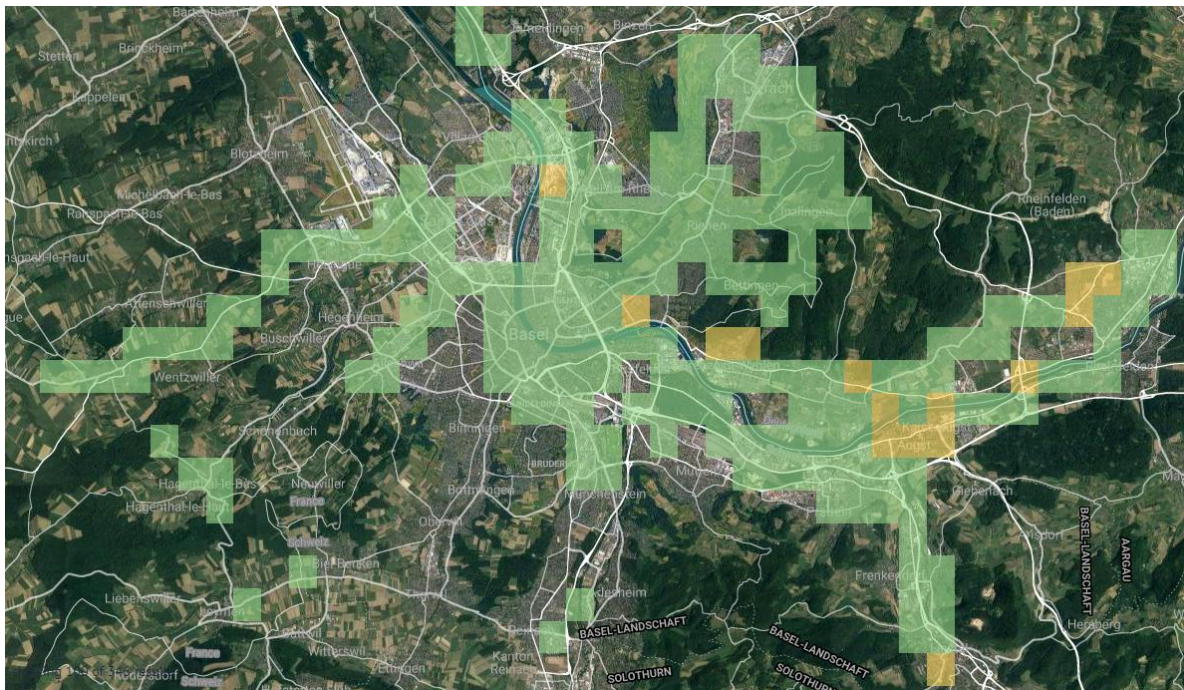




Abschlusstreffen AtmoVISION Messkampagne mit Mikrosensoren





Vielen Dank für über 600 Messungen

Heimweg mit Tram
Kangaroo
AirBeam2-PM10

- avg. 10 $\mu\text{g}/\text{m}^3$
- min. 4 ● max. 78

01/30/20 17:34-18:03

Trottinette tour #1
AirBeam2-PM10

- avg. 6 $\mu\text{g}/\text{m}^3$
- min. 0 ● max. 58

01/31/20 19:10-19:41

Bike tour
AirBeam2-PM10

- avg. 38 $\mu\text{g}/\text{m}^3$
- min. 24 ● max. 95

01/26/20 12:08-12:42

velo
subject0
AirBeam2-PM10

- avg. 0 $\mu\text{g}/\text{m}^3$
- min. 0 ● max. 3

01/28/20 12:55-13:02

Spaziergang Riehen
Kangaroo
AirBeam2-PM10

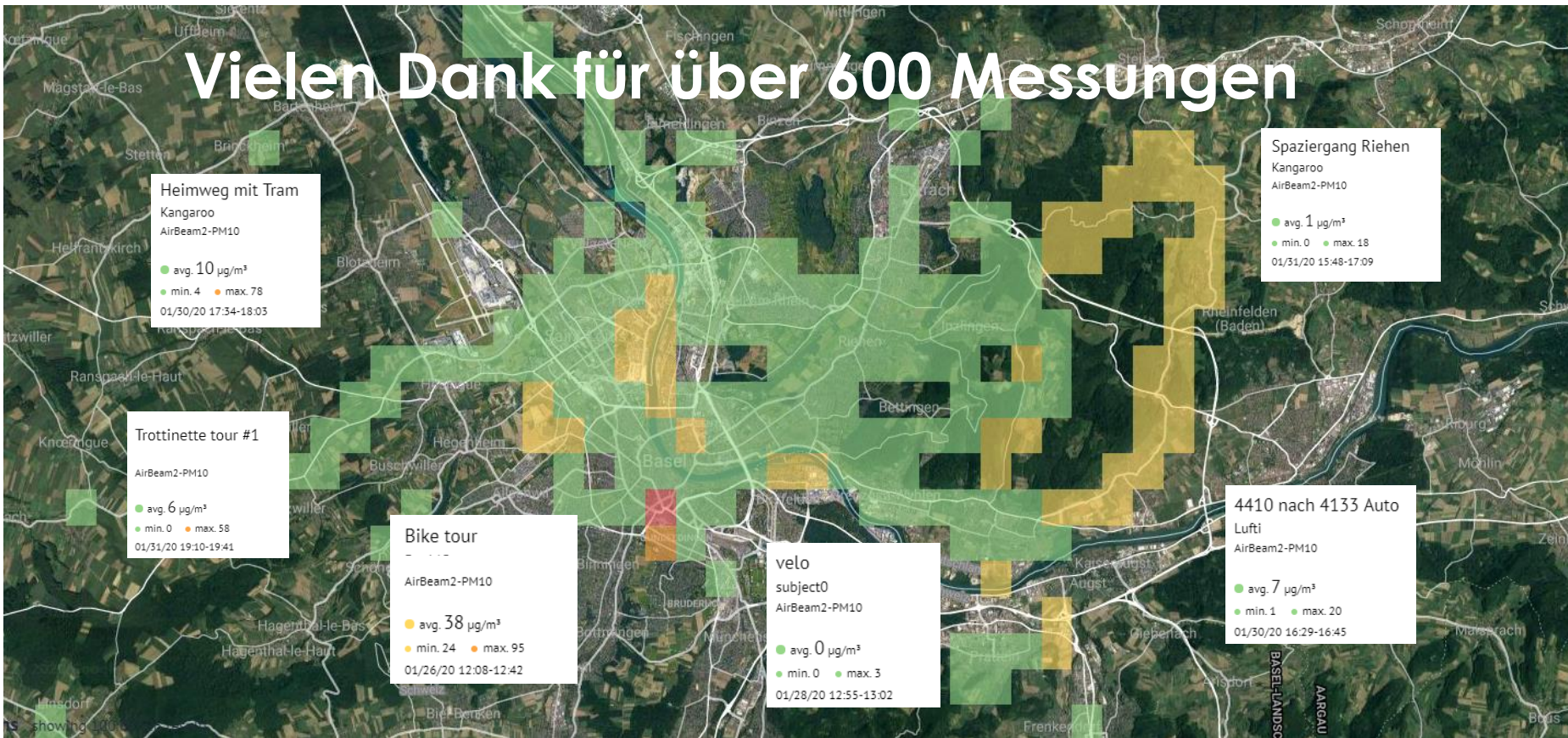
- avg. 1 $\mu\text{g}/\text{m}^3$
- min. 0 ● max. 18

01/31/20 15:48-17:09

4410 nach 4133 Auto
Lufti
AirBeam2-PM10

- avg. 7 $\mu\text{g}/\text{m}^3$
- min. 1 ● max. 20

01/30/20 16:29-16:45





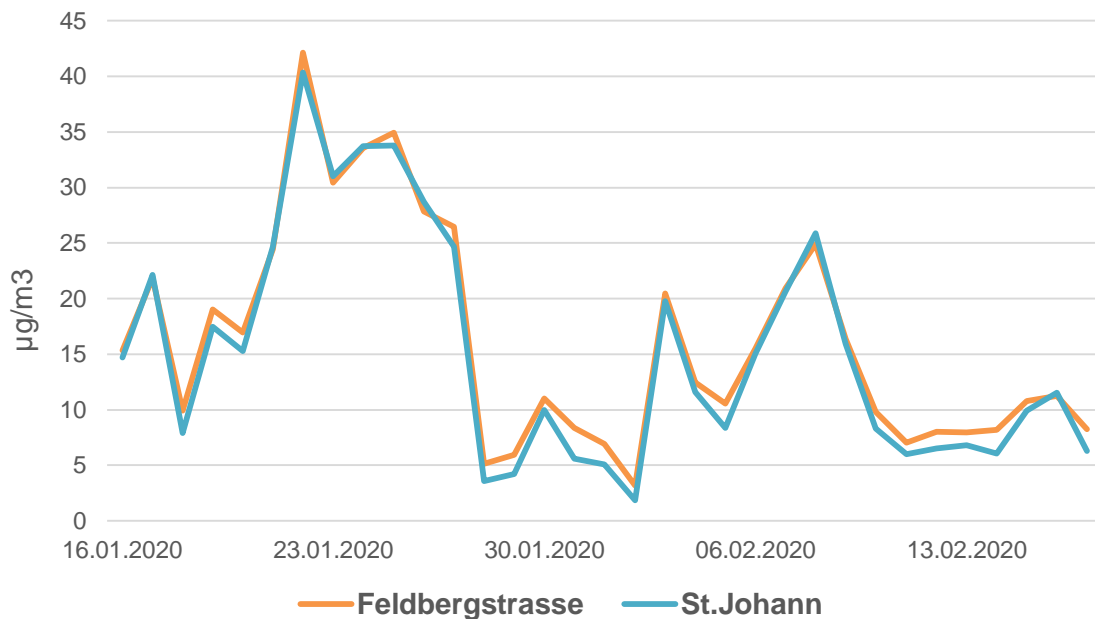
Immissionsgrenzwerte der schweizerischen Luftreinhalte-Verordnung (LRV)

| | |
|-----------------|---|
| Feinstaub PM10 | 20 $\mu\text{g}/\text{m}^3$ Jahresmittelwert (arithmetischer Mittelwert) |
| | 50 $\mu\text{g}/\text{m}^3$ 24-h-Mittelwert; darf höchstens dreimal pro Jahr überschritten werden |
| Feinstaub PM2.5 | 10 $\mu\text{g}/\text{m}^3$ Jahresmittelwert (arithmetischer Mittelwert) |

- Für Feinstaub PM2.5 gibt es nur einen vorgegebenen Jahresmittelwert. Für PM1 gibt es keine Immissionsgrenzwerte.



PM10-Werte an permanenten Messstationen



Mittelwerte 16.01. – 17.02.20

Feldbergstrasse 16 µg/m³
St. Johann 15 µg/m³





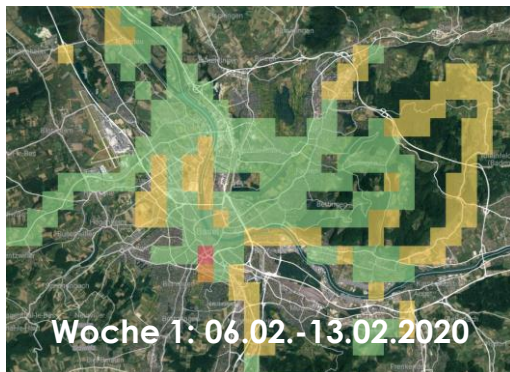
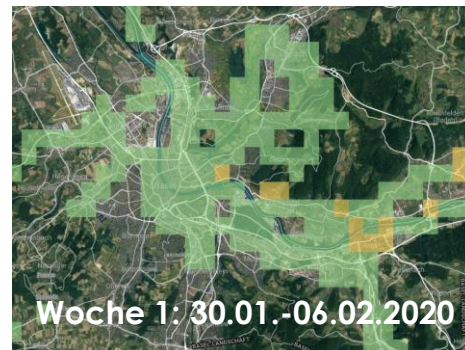
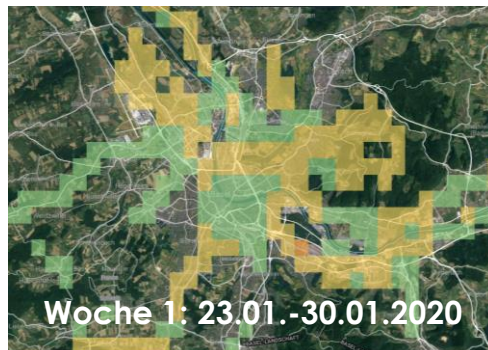
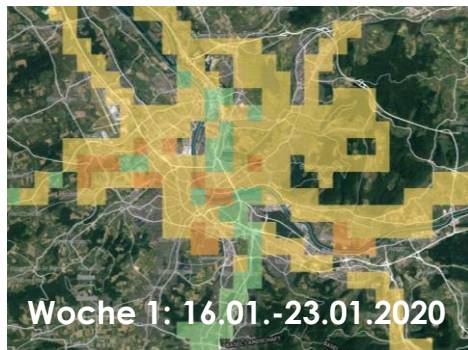
Vergleich Station Feldbergstrasse mit Sensor

| Messung 1 | PM10 ($\mu\text{g}/\text{m}^3$) | PM2.5 ($\mu\text{g}/\text{m}^3$) |
|-----------|-----------------------------------|------------------------------------|
| Station | 28 | 23 |
| Airbeam | 35 | 23 |
| Messung 2 | PM10 ($\mu\text{g}/\text{m}^3$) | PM2.5 ($\mu\text{g}/\text{m}^3$) |
| Station | 28 | 24 |
| Airbeam | 30 | 21 |





Wochenansicht 16.01.-20.02.20

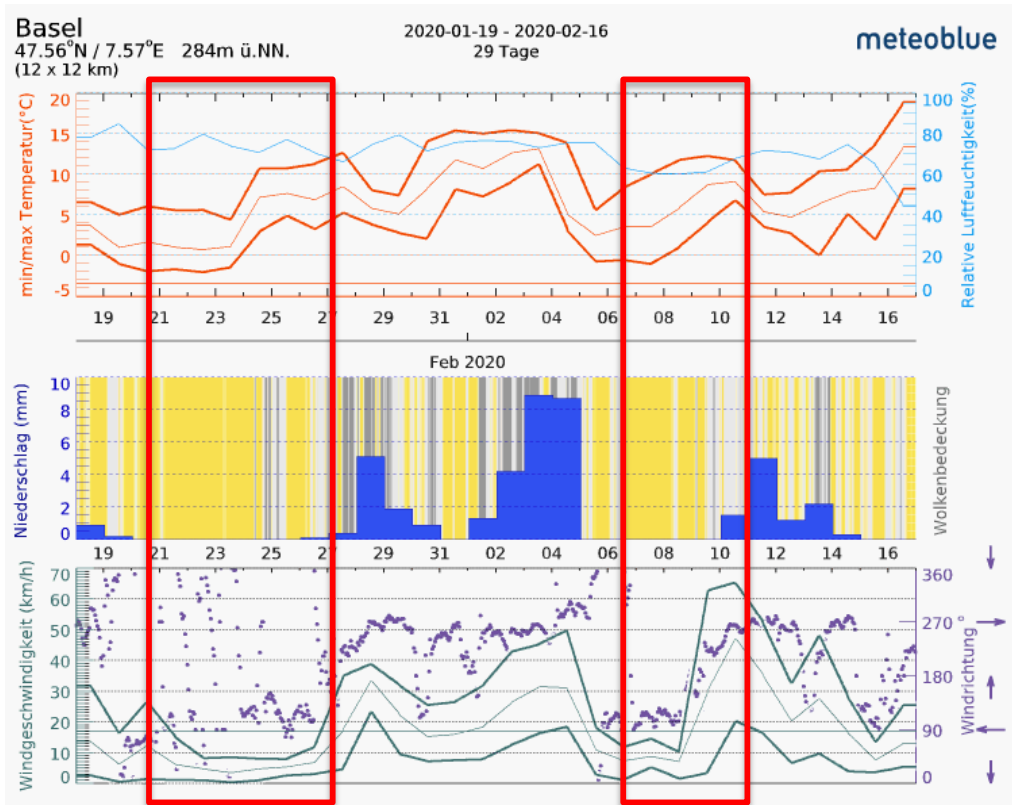
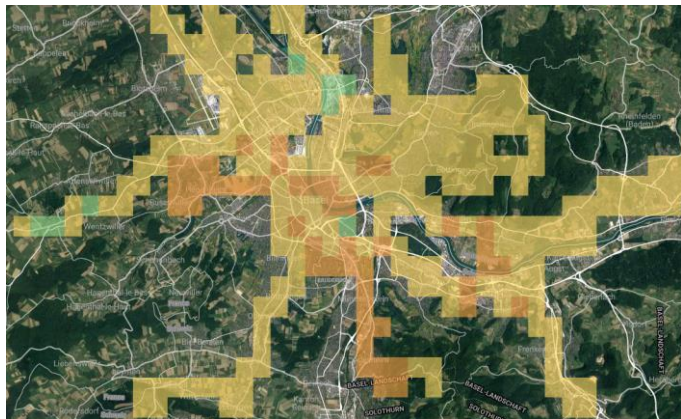




Einfluss Wetter

Kriterien für erhöhte Feinstaubwerte:

- Inversionswetterlage; «Wintersmog»
- Fehlender Regen
- Geringe Windgeschwindigkeit



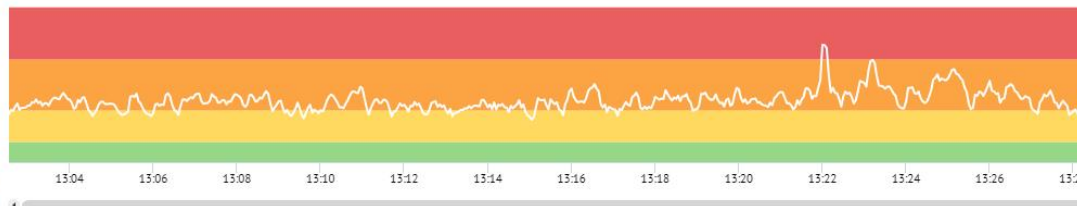


Basel Buschwiler by bike

zoom 1min 5min 30min 1hr 12hrs All

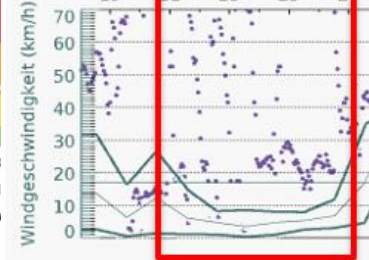
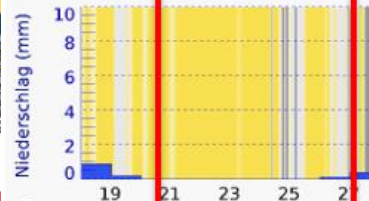
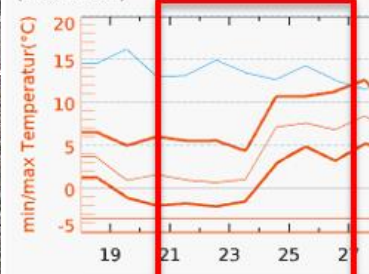
AirBeam2-PM10

● avg. 61 $\mu\text{g}/\text{m}^3$
● min. 38 ● max. 115
01/22/20 13:02-13:36



export session

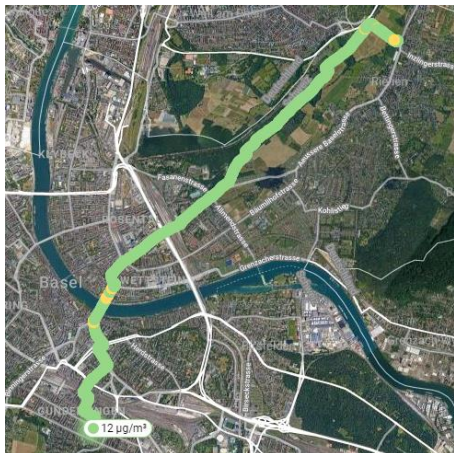
Basel
47.56°N / 7.57°E 284m ü.NN.
(12 x 12 km)





Route Basel - Riehen

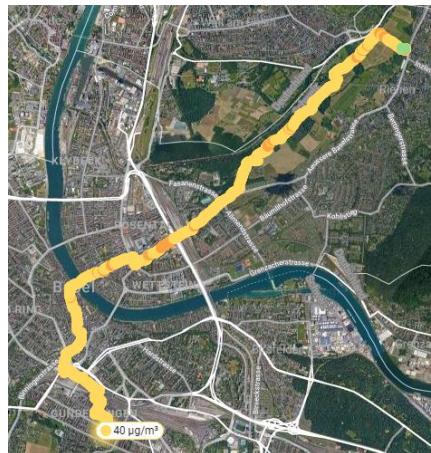
20.01.2020 abends



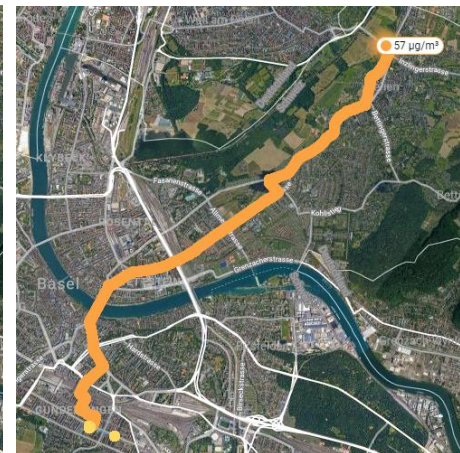
21.01.2020 morgens

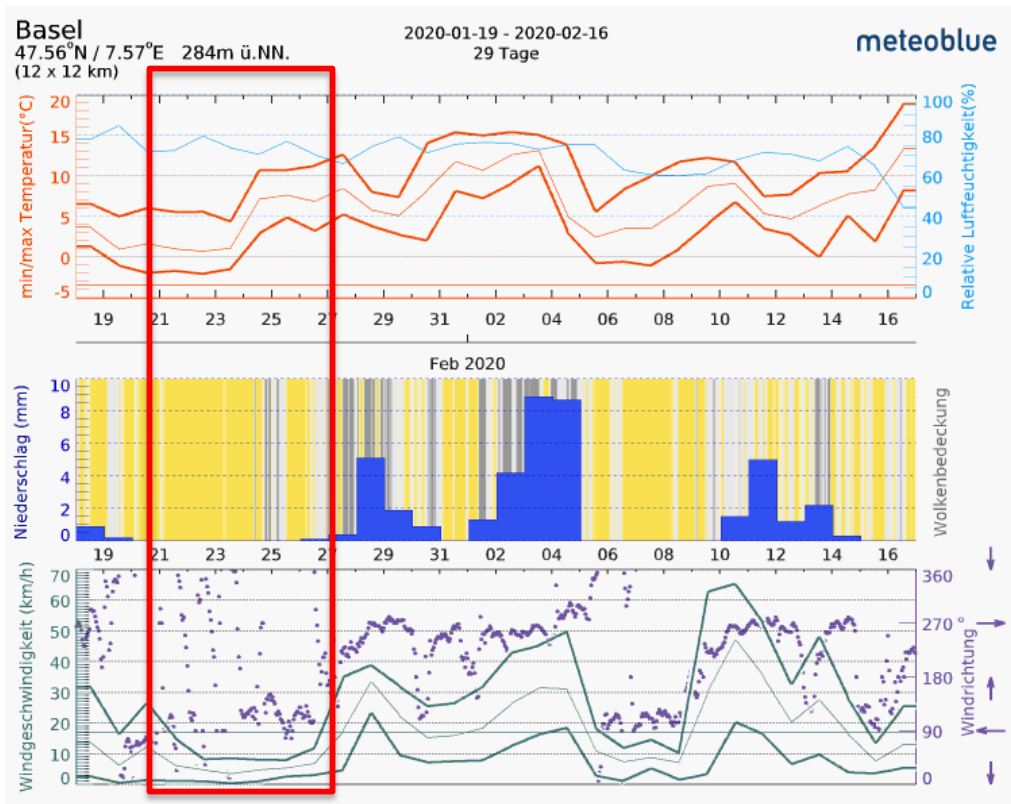


21.01.2020 abends



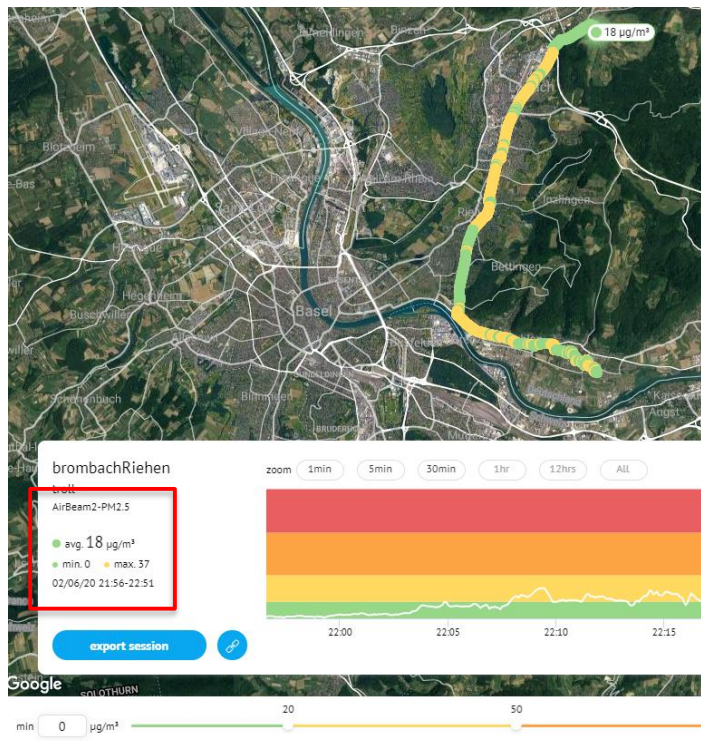
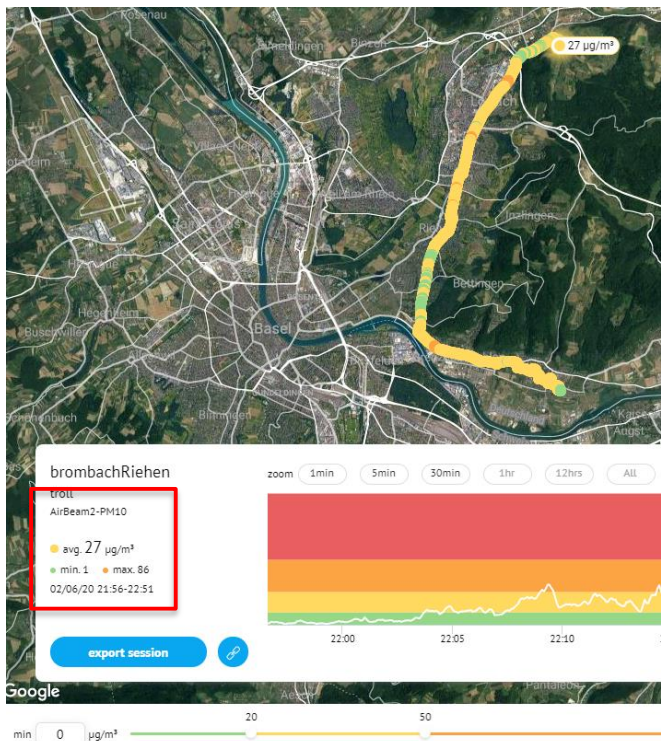
22.01.2020 morgens





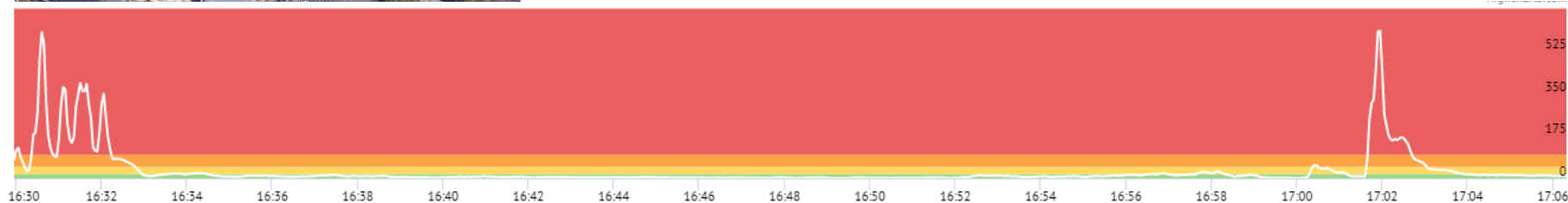
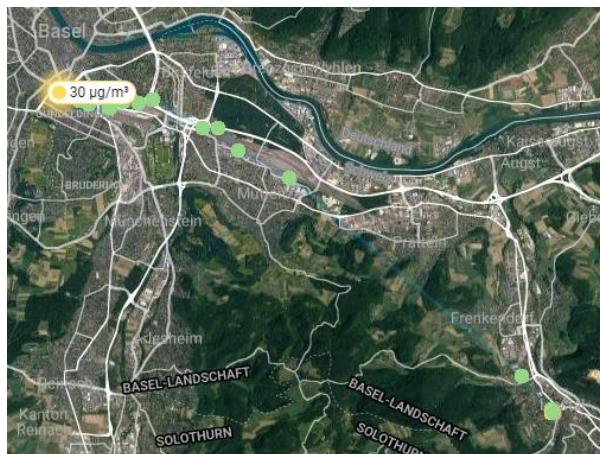
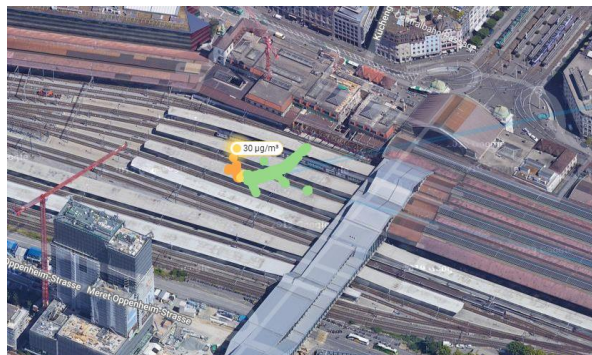


Vergleich PM10 / PM2.5



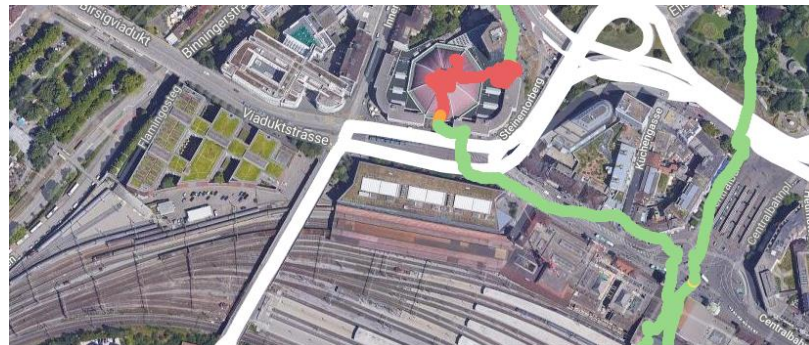


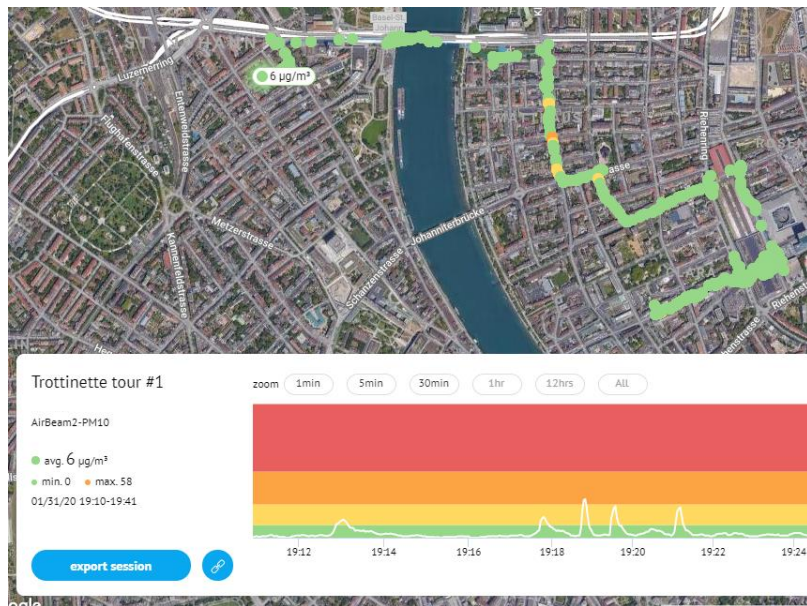
Basel – Liestal Zugfahrt





Spitzenwerte in der Markthalle Basel





Birs

AirBeam2-PM10

- avg. 26 µg/m³
 - min. 0 ● max. 55
- 02/08/20 15:40-16:30

GartenimSturm troll

AirBeam2-PM10

- avg. 3 µg/m³
 - min. 0 ● max. 137
- 02/10/20 08:51-09:03

Tram Marktplatz BS - 4133 Pratteln

Lufti
AirBeam2-PM10

- avg. 9 µg/m³
 - min. 1 ● max. 48
- 01/16/20 19:11-19:52

Hof / garten

Kangaroo
AirBeam2-PM10

- avg. 2 µg/m³
 - min. 0 ● max. 9
- 01/18/20 16:24-17:31

Evening walk

AirBeam2-PM10

- avg. 10 µg/m³
 - min. 4 ● max. 21
- 01/20/20 17:32-17:54

velo.auto

subject0
AirBeam2-PM10

- avg. 12 µg/m³
 - min. 3 ● max. 19
- 01/20/20 11:41-11:46

Inzlingen bei Regen

Greyhound
AirBeam2-PM10

- avg. 28 µg/m³
 - min. 8 ● max. 39
- 01/17/20 15:38-15:42

Heimfahrt Sonnenschein

AirBeam2-PM10

- avg. 3 µg/m³
 - min. 0 ● max. 16
- 02/18/20 17:17-17:51



Spaziergang Riehen

Kangaroo
AirBeam2-PM10

- avg. 31 µg/m³
 - min. 4 ● max. 47
- 01/26/20 10:14-12:30

